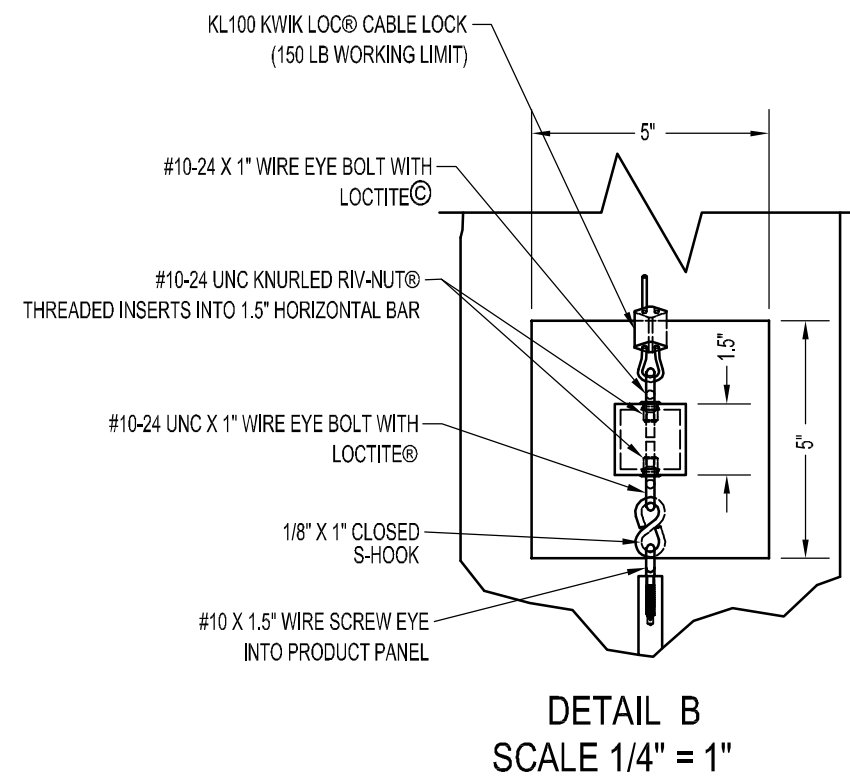
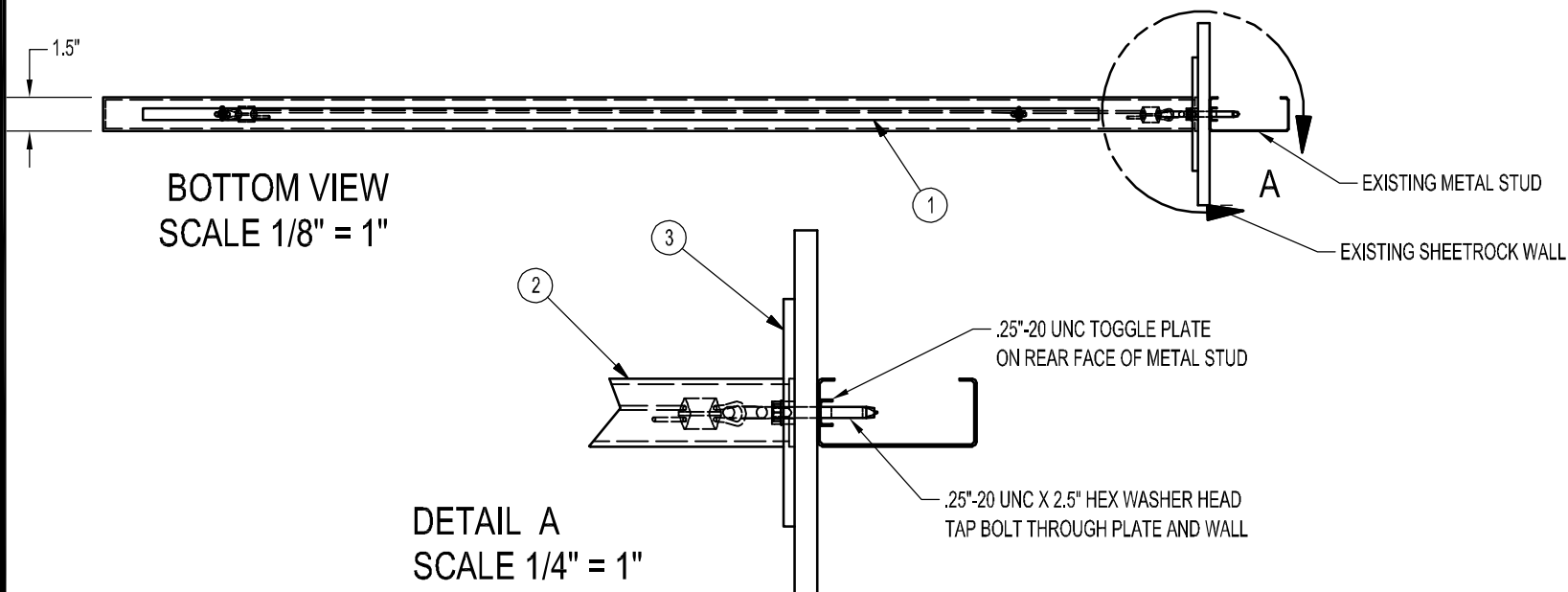


DEPARTMENT BLADE SIGN GENERAL NOTES

- 1) PRODUCT PANEL TO BE .5" MDF FACES WITH INTEGRATED EDGES TO BE LAMINATED WITH PL-2.
- 2) HORIZONTAL BAR TO BE 1.5" X .125" WALL ALUMINUM 6061-T6 SQUARE TUBE. PROTRUDING END TO BE CLOSED WITH NO VISIBLE SEAMS.
- 3) WALL PLATE TO BE 5" X 5" X .25" THK ALUMINUM 5052-H32 AND PAINTED M-2. WALL PLATE TO BE NOTCHED TO ALLOW HORIZONTAL BAR TO BE WELDED FROM BACK OF PLATE USING FRONIUS TRANSPULSE SYNERGIC WELDING BY AWS CERTIFIED WELDERS. NO WELDS SHALL BE VISIBLE FROM THE FRONT SIDE OF WALL PLATE. WELDS TO BE RECESSED INTO BACK OF PLATE TO PROVIDE A FLAT SURFACE FOR MOUNTING TO THE WALL. WELDS SHALL NOT BE GROUND DOWN TO MAINTAIN MAXIMUM STRUCTURAL INTEGRITY.
- 4) DECORATIVE VINYL LETTERING ON BOTH FACES OF PRODUCT PANEL TO BE V-1. (SEE SHEET ID5.4B FOR DETAILS)
- 5) FRAMEWORK AND HARDWARE TO BE PAINTED M-3.



Department Blade Sign

DeCA
Adaptive Uniform Decor Package

Defense Commissary Agency
Lackland AFB, Texas
Fort Lee, Virginia



ID5.4A