

Vertical Mezzanine Gate

Product Literature

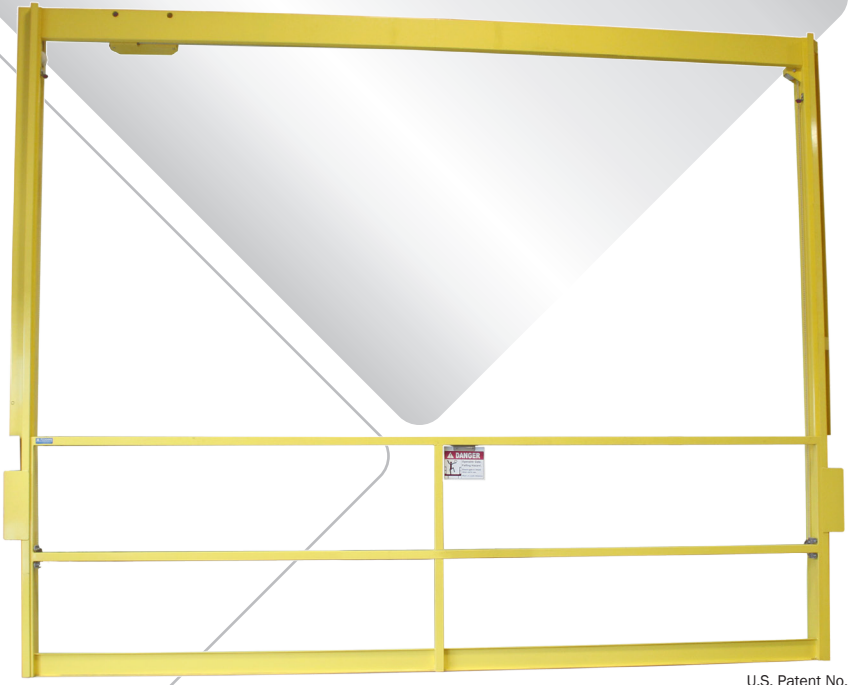
Material handling is more efficient with PS DOORS Mezzanine Gates. Once installed on your mezzanine, this gate opens and closes as needed. Forklift materials to your elevated space and close the gate to protect employees from dangerous workplace falls.

Vertical Mezzanine Gate vertically opens by manual or automated operation. Activate your gate with the push of a button or a pull of a cord. Once material has been delivered to your mezzanine, the gate closes by timer or other activation device to quickly protect the mezzanine edge.

Designed to meet federal OSHA safety railing requirements.

Product Features:

- Ideal for material handling, mezzanine safety, pallet racking and loading docks
- Available in seven sizes to meet your opening width requirement
- Powder coat yellow finish, custom stainless steel finish available
- Manual, electric, pneumatic/pneumatic or pneumatic/electric operation available
- On-deck or off-deck mounting options
- 42" high gate with 4" toe board
- 120" tall vertical columns with 84" clear opening height



U.S. Patent No. 5806245



Shown: MGHEM144042



Vertical Mezzanine Gate

Product Literature

Standard Technical Data:

Material:

- Gate: 1-1/2" square, 11 gauge tube, factory welded. Solid horizontal top rail and mid-rail, 4" high toeboard, 42" overall height, and vertical members not to exceed 96" on center.
- Vertical Guide Column Assembly shall consist of tubular columns (120" standard length), prepped for the gate operating hardware and applicable mounting brackets. Guide assemblies shall be fabricated to allow gate to bypass idler sheaves to utilize full installation height.
- Gate Material: To be one of the following:
 - Mild Steel
 - Stainless Steel, 304-2b (contact PS DOORS for stainless steel product numbers)

Hardware:

- Gate to have a minimum of four (4) non-corrosive guide bearings, which require no lubrication.

Finish:

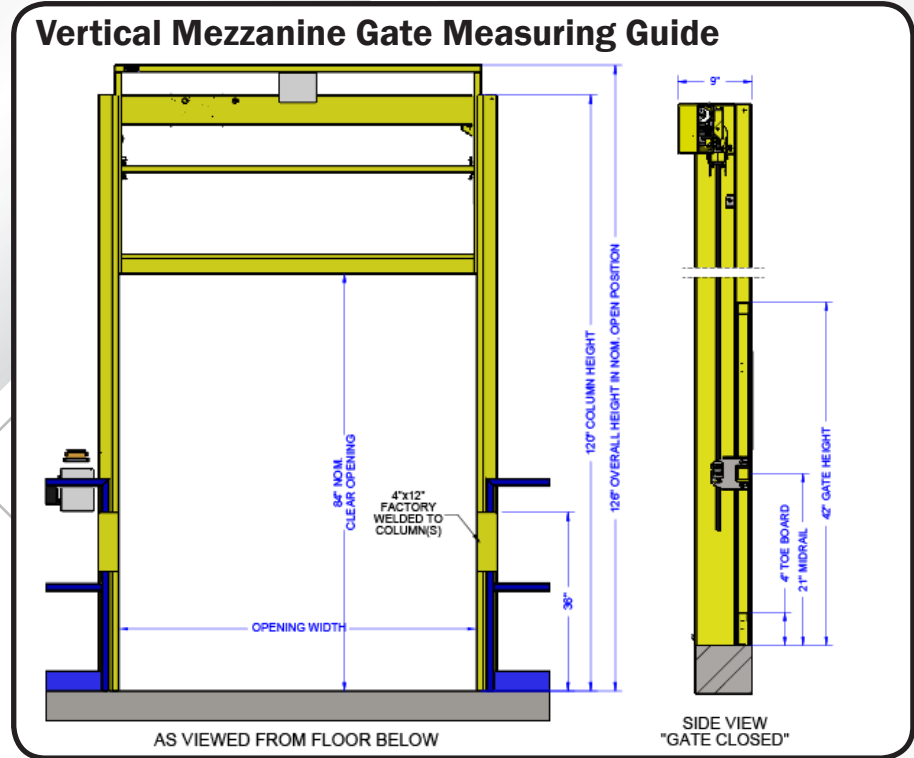
- Mild Steel: Powder Coat Yellow on all unfinished exposed surfaces. (Standard)
- Stainless Steel: Mill Finish/Unpainted on all unfinished, exposed surfaces (Custom).

Performance Rating:

- Gate shall meet or exceed OSHA requirements, relative to dimensions and loads, at the time of manufacture.

Installation:

- Mounting Location: Deck Mount (Standard) or Face Mount available.



Opening Width	Operator Option	Product Number
48" (Made to order)	Manual	MGHMM048042
48" (Made to order)	Electric	MGHEM048042
48" (Made to order)	Electric/Pneumatic	MGVNM048042
48" (Made to order)	Pneumatic/Pneumatic	MGVPM048042
72" (Stocked Size)	Manual	MGHMM072042
72" (Stocked Size)	Electric	MGHEM072042
72" (Stocked Size)	Electric/Pneumatic	MGVNM072042
72" (Stocked Size)	Pneumatic/Pneumatic	MGVPM072042
96" (Stocked Size)	Manual	MGHMM096042
96" (Stocked Size)	Electric	MGHEM096042
96" (Stocked Size)	Electric/Pneumatic	MGVNM096042
96" (Stocked Size)	Pneumatic/Pneumatic	MGVPM096042
120" (Made to order)	Manual	MGHMM120042
120" (Made to order)	Electric	MGHEM120042
120" (Made to order)	Electric/Pneumatic	MGVNM120042
120" (Made to order)	Pneumatic/Pneumatic	MGVPM120042
144" (Made to order)	Manual	MGHMM144042
144" (Made to order)	Electric	MGHEM144042
144" (Made to order)	Electric/Pneumatic	MGVNM144042
144" (Made to order)	Pneumatic/Pneumatic	MGVPM144042
168" (Made to order)	Manual	MGHMM168042
168" (Made to order)	Electric	MGHEM168042
168" (Made to order)	Electric/Pneumatic	MGVNM168042
168" (Made to order)	Pneumatic/Pneumatic	MGVPM168042
192" (Made to order)	Manual	MGHMM192042
192" (Made to order)	Electric	MGHEM192042
192" (Made to order)	Electric/Pneumatic	MGVNM192042
192" (Made to order)	Pneumatic/Pneumatic	MGVPM192042

* Custom sizing and design available. Mild Steel product numbers shown.



Standard Technical Data for the Vertical Mezzanine Gate

1. Mezzanine Gate Operation to be one of the following;
 - a. Manual; counterweighted for ease of operation.
 - b. Electric; Electric drive system, 115 VAC, (24 VDC Secondary), 60 HZ, 1/3 HP. Operator control panel includes Timer-to-Close capability, Obstruction Sensing and one (1) three-button (Open-Stop-Close) control panel mounted push button station, and one (1) remotely located wall mount 3-Button push button. Includes Amber color WARNING strobe light, activates when gate is in operation.
 - c. Pneumatic Operation/Electric Controls; Pneumatic Drive Cylinder requires 90-100 psi clean and dry air, provided by others. Operator control panel requires 115 VAC (24 VAC Secondary), 60 HZ, includes Timer-to-Close capability, and two (2) remotely located wall mount single push button. Includes Amber color WARNING strobe light, activates when gate is in operation.
 - d. Pneumatic Operation/Pneumatic Controls; Pneumatic Drive Cylinder requires 90-100 psi clean and dry air, provided by others. Includes two (2) remotely located two button (Open-Close) push button station.

2. Mounting Location on mezzanine to be one of the following;
 - a. Deck Mount
 - b. Face Mount

3. Gate Section; to be factory welded frame work with horizontal top rail. Includes mid-rail, 4" high toe board, 42" overall height, and vertical members not to exceed 8' on center. Gate to have a minimum of four (4) non-corrosive guide blocks, no lubrication required. Gate shall meet or exceed Federal OSHA standard for standard railings at the time of manufacture relative to dimensions and loading. To be fabricated from one of the following;
 - a. Mild Steel
 - b. 304-2b Stainless Steel
 - c. 316L Stainless Steel

4. Vertical Guide Column Assembly; shall consist of formed columns of the same material as gate section, 120" standard height, prepped for the gate operating hardware and applicable mounting brackets. Standard Vertical Guide Column assemblies shall be fabricated to allow gate to bypass idler sheaves providing for a standard Clear Opening Height of 84".

5. Finish to be;
 - a. Mild steel mezzanine gates; exposed surfaces to be Powder Coat Safety Yellow. Hardware/fasteners to be Zinc plated.
 - b. Stainless steel mezzanine gates (304-2b or 316L); mill finish, acid washed. Interfering welds ground smooth, not polished. Hardware/fasteners to be Stainless Steel.

6. Warranty to be One (1) Year from date of shipment, finish excluded.

7. Available Options:
 - a. Electric and Pneumatic Operation/Electric Controls: Remote Controls, includes one (1) Universal Co-Axial Receiver and one (1) keypad transmitter.

Exclusions:

1. All electrical wiring or airline piping to and between all components by others.
2. Structural Review of mezzanine to accept loading and anchor design by others.

NAME	ADDRESS	PHONE
COMPANY	CITY, ST, ZIP	EMAIL



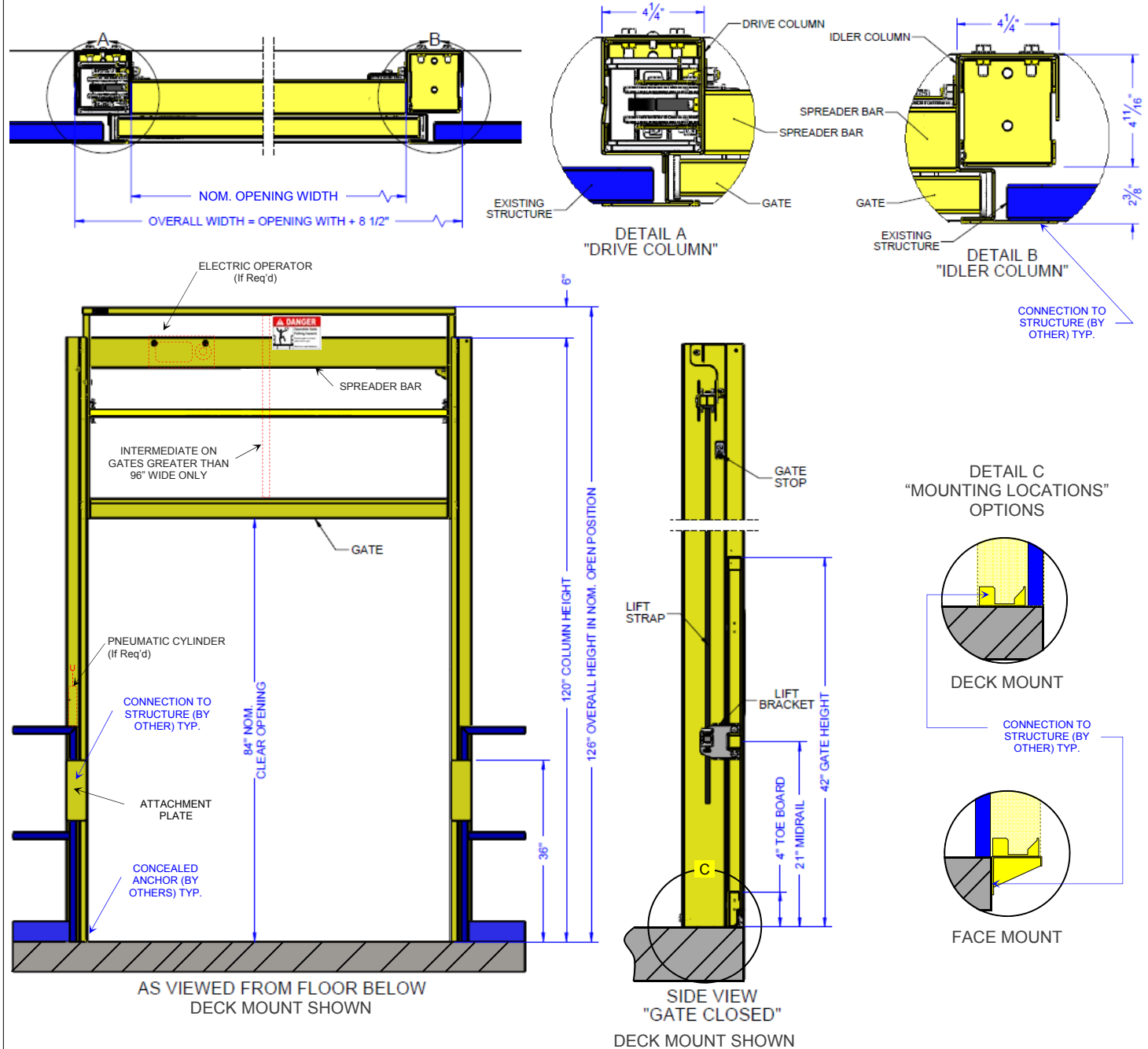
1150 S. 48TH STREET, GRAND FORKS, ND 58201
 PHONE 701.746.4519 TOLL FREE 877.446.1519
 FAX 701.746.8340 WWW.PSDOORS.COM

Quantity: _____

<input checked="" type="checkbox"/>	ID	Operation¹
<input type="checkbox"/>	M	Manual
<input type="checkbox"/>	E	Electric
<input type="checkbox"/>	N	Pneumatic Operation/Electric Controls
<input type="checkbox"/>	P	Pneumatic Operation/Pneumatic Controls
<input checked="" type="checkbox"/>	ID	Mounting Location (See Detail C)
<input type="checkbox"/>	D	Deck Mount
<input type="checkbox"/>	F	Face Mount
<input checked="" type="checkbox"/>	ID	Material/Finish
<input type="checkbox"/>	M	Mild Steel (Powder Coat Safety Yellow)
<input type="checkbox"/>	S	304 Stainless Steel (Unfinished/Mill)
<input type="checkbox"/>	L	316L Stainless Steel (Unfinished/Mill)
<input checked="" type="checkbox"/>	ID	Nominal Opening Width
<input type="checkbox"/>	048	4' (48")
<input type="checkbox"/>	072	6' (72") - STOCK SIZE ³ (Std. Col. Only)
<input type="checkbox"/>	096	8' (96") - STOCK SIZE ³ (Std. Col. Only)
<input type="checkbox"/>	120	10' (120")
<input type="checkbox"/>	144	12' (144")
<input type="checkbox"/>	168	14' (168")
<input type="checkbox"/>	192	16' (192")
<input type="checkbox"/>	###	Custom _____ (inches)
<input checked="" type="checkbox"/>	ID	Column Height
<input type="checkbox"/>	120	Standard (120") ²
<input type="checkbox"/>	###	Custom _____ (inches)
<input checked="" type="checkbox"/>	Custom Clear Opening Height⁴	
<input type="checkbox"/>	-- Dimension Required: _____ (inches)	
<input checked="" type="checkbox"/>	ID	OPTIONS¹ (Electric Controls Only)
<input type="checkbox"/>	511322	Radio Control Kit; Keypad
<input type="checkbox"/>	502918	Add'l Transmitter; Keypad Qty: _____
<input type="checkbox"/>	501715	Switch; Ceiling Pull Cord
<input type="checkbox"/>	511756	Photoeye Kit (Electric)
<input type="checkbox"/>	511754	Photoeye Kit (Pneumatic/Electric)

NOTES:

- See product Technical Data for details.
- Standard Column Height provides for 84" of Clear Opening Height below gate when in the full open position.
- Stock Gates are Mild Steel with Powder Coat Yellow Finish and Standard (120") Column, ONLY.
- If greater or less than 84", Custom Column Required.



NAME	ADDRESS	PHONE
COMPANY	CITY, ST, ZIP	EMAIL



1150 S. 48TH STREET, GRAND FORKS, ND 58201
 PHONE 701.746.4519 TOLL FREE 877.446.1519
 FAX 701.746.8340 WWW.PSDOORS.COM